

8 - 1

GEOMETRIC MEAN

GEOMETRIC MEAN

*Comparison of any two real numbers
(a & b) using a proportion.*

$$\frac{a}{x} = \frac{x}{b}$$

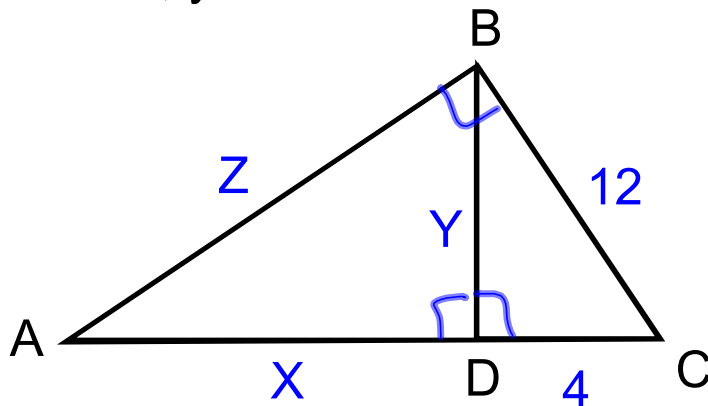
EXAMPLE

Calculate the Geometric Mean

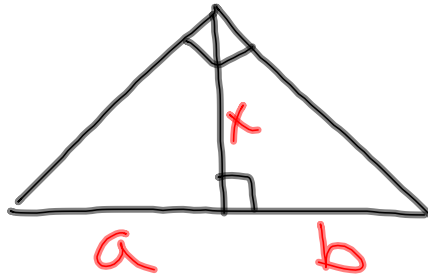
1) 6 & 8

2) $(3\sqrt{3})(4\sqrt{3})$

Solve for x, y and z

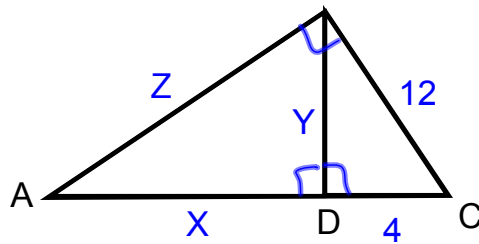


ALTITUDE SHORTCUT

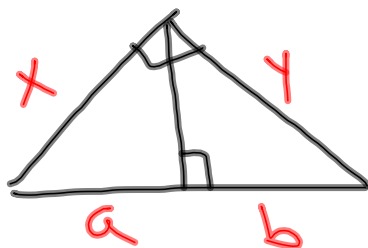


$$\frac{\text{part of hypotenuse}}{\text{altitude}} = \frac{\text{altitude}}{\text{other part of hypot.}}$$

EXAMPLE



LEG SHORTCUT



$$\frac{\text{leg}}{\text{adjacent part of hyp.}} = \frac{\text{total hypotenuse}}{\text{leg}}$$

Solve for x, y and z

